

# Master of Public Health MPH



## Student Handbook

*Revised August 2017*

## **Introduction**

This student handbook serves as a basic orientation to the Master of Public Health (MPH) Program. It is considered a supplement to the **Eastern Kentucky University (EKU) *Graduate Catalog*** and has been developed to provide additional information and guidance to current and prospective students in the MPH Program. Included herein is information regarding application and admission procedures, program descriptions, and requirements for completion of the MPH degree options.

## Table of Contents

Program Overview	3
Accreditation Information .....	3-4
Vision, Mission, Goals and Objectives.....	3-4
Program Competencies .....	4
Organizational Structure of the MPH Program .....	5
Administrative/Faculty Contacts .....	6-7
Admission Criteria, Deadlines and Procedures .....	8
Graduate Assistantships .....	9
Advising .....	9
Master of Public Health Program Curriculum	10
Core Courses .....	11
CHE Option.....	12
EHS Option .....	12
IH Option.....	13
Nutrition Option.....	14
Course Descriptions	
Core Courses .....	15-19
Capstone and Option Courses .....	
Planned Program of Study – Community Health Option Planned Program of Study – Environmental Health Option Planned Program of Study – Industrial Hygiene Option Planned Program of Study – Nutrition Option	20-23
Student Grievances Regarding Course Grades.....	24
Program Closure	
Core Course Examination.....	24
Practicum.....	
Culminating Experience and Presentation.....	24-26
Applying for Graduation	
Appendix A: Program Competencies.....	27-36

## **Master of Public Health Program Overview**

The MPH Program is tailored to meet the needs of individuals working in or planning to work in a public health profession. Classes are offered on evenings, Saturdays, via the Internet and/or at interactive television sites throughout Kentucky. The Program consists of 21 semester hours of core requirements and 22 semester hours in one of the following options: *Community Health Education, Environmental Health Science, Industrial Hygiene, or Public Health Nutrition.*

### **Program Accreditation Status**

The ECU MPH Program is accredited by the Council on Education for Public Health (CEPH). Our initial accreditation was granted by CEPH on June 14, 2008. The MPH Program was reaccredited through December 30, 2020.

CEPH is an independent agency recognized by the U.S. Department of Education to accredit schools of public health and graduate public health programs outside schools of public health. The goal of the Council is "to enhance health in human populations through organized community effort." The Council's focus is the improvement of health through the assurance of professional personnel who are able to identify, prevent and solve community health problems.

The Council's objectives are:

- to promote quality in public health education through a continuing process of self-evaluation by the schools and programs that seek accreditation;
- to assure the public that institutions offering graduate instruction in public health have been evaluated and judged to meet standards essential for the conduct of such educational programs; and
- to encourage - through periodic review, consultation, research, publications, and other means - improvements in the quality of education for public health.

### **Vision**

The ECU MPH Program will be recognized at the state and national levels for providing a quality, diverse, student-focused education that is sustainable and adaptive to meet the evolving needs of the public health professions, and which fosters the development of public health values and ethical practice.

### **Mission**

The mission of the ECU MPH Program is to prepare competent public health practitioners who are able to enhance the health status and quality of life in local, state, regional, and global communities.

## **Master of Public Health Program Overview (cont.)**

### **Instructional Goal**

The ECU MPH Program prepares professionals for broad-based practice in public health, through the integration of core competencies in the five areas of knowledge basic to public health (behavioral sciences, biostatistics, epidemiology, environmental health science, and public health administration) with specialized knowledge, competencies, and expertise in a selected public health discipline area.

### **MPH Service Goal**

The faculty and students of ECU MPH Program serve the public health community by participating in partnerships and collaborative endeavors.

### **MPH Scholarship Goal**

Faculty and students of the ECU MPH Program contribute to the theory and practice of public health through participation in scholarly activities.

### **Educational Program Objectives**

Students who complete the MPH degree will be able to:

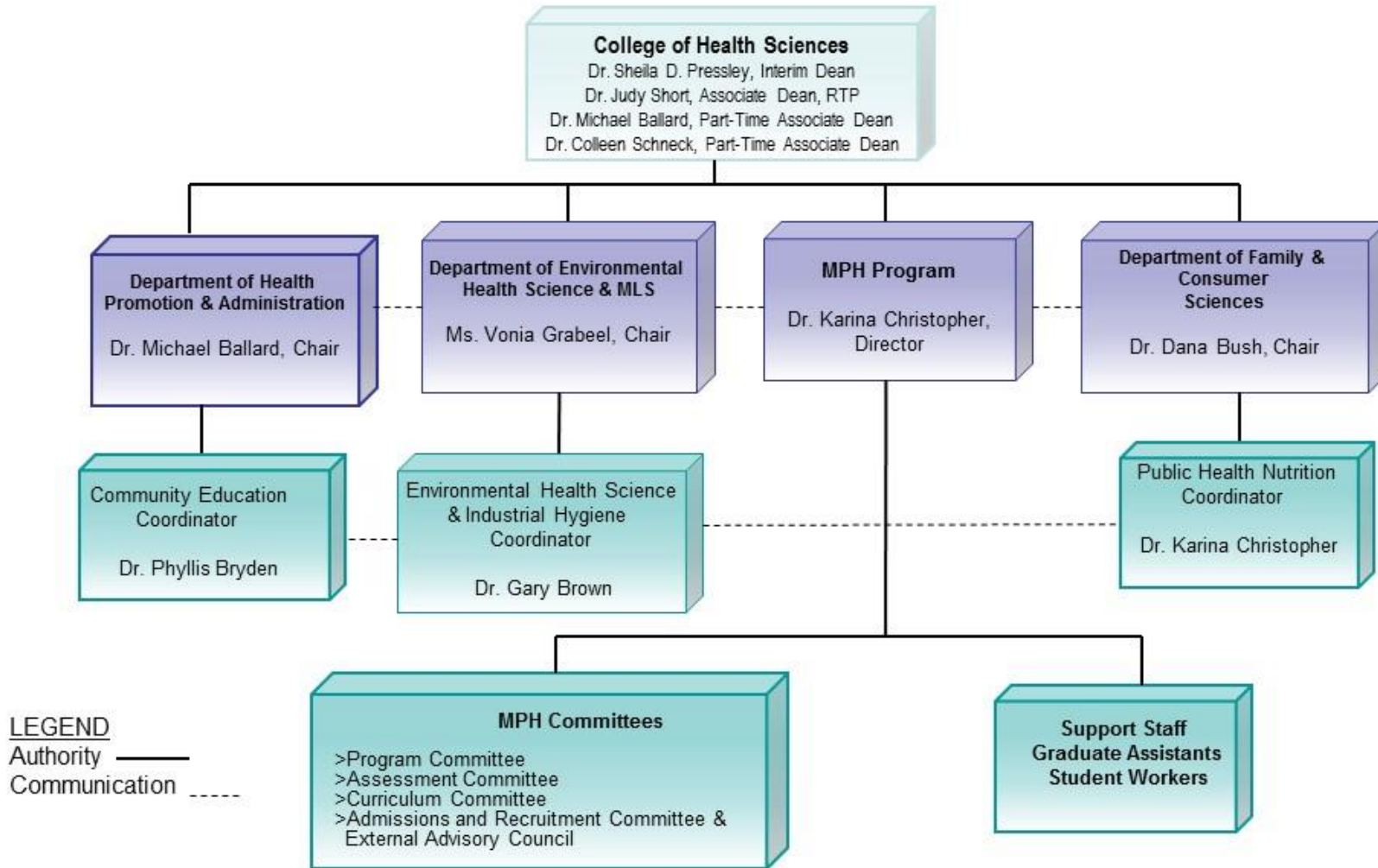
1. Contribute to the public health profession through sound professional public health attitudes, values, concepts and ethical practices.
2. Recognize and facilitate diversity of thought, culture, gender and ethnicity through communication and collaboration.
3. Participate in professional development, scholarship, service, and educational activities that contribute to public health.
4. Integrate and apply the crosscutting knowledge and skills (competencies) within five core public health areas of knowledge (behavioral sciences, biostatistics, epidemiology, environmental health science, and public health administration).
5. Demonstrate advanced knowledge and skills necessary for specialized roles within public health specific to community health or environmental health.

### **MPH Program Competencies**

The MPH courses and other program requirements relate directly to the accomplishment of the public health competencies and discipline-specific competencies. Appendix A of this Handbook outlines the competencies and highlights which competencies are specifically addressed in each course.

## Organizational Structure of the EKU Master of Public Health Program

*The Master of Public Health Program at Eastern Kentucky University involves three departments in the College of Health Sciences. The Community Health Education Program Option is housed in the Department of Health Promotion and Administration. The Environmental Health Science and Industrial Hygiene Program Options are housed in the Department of Environmental Health Science. The Public Health Nutrition Option is housed in the Department of Family and Consumer Sciences.*



# Administrative/Faculty Contacts

## MPH PROGRAM

**Dr. Karina Christopher**

Director

Dizney 132

859-622-1165

[karina.christopher@eku.edu](mailto:karina.christopher@eku.edu)

## Community Health Education Faculty

**Dr. Mike Ballard**

Chair/Professor Health  
Promotion & Administration  
Begley 420

(859) 622-1142 or 622-1916

[michael.ballard@eku.edu](mailto:michael.ballard@eku.edu)

**Dr. Phyllis Bryden RN, CPH**

CHE Option Coordinator (Health  
Promotion and Administration)

Associate Professor

859-622-1147/Begley 428

[phyllis.bryden@eku.edu](mailto:phyllis.bryden@eku.edu)

**Dr. Michelyn Bhandari CPH,**

**MCHES**

Professor

Health Promotion &  
Administration Begley 424

(859) 622-1145

**Dr. Derek Holcomb**

Associate Professor

CHE Option (Health Promotion &  
Administration)

[Derek.holcomb@eku.edu](mailto:Derek.holcomb@eku.edu)

**Dr. Molly McKinney**

Assistant Professor

CHE Option (Health Promotion &  
Administration)

[Molly.McKinney@eku.edu](mailto:Molly.McKinney@eku.edu)

**Dr. Laurel Mills Schwartz**

Assistant Professor

CHE Option (Health Promotion &  
Administration)

[laurel.mills@eku.edu](mailto:laurel.mills@eku.edu)

**Dr. Laurie Larkin**

Assistant Professor

CHE Option (Health Promotion &  
Administration)

[Laurie.larkin@eku.edu](mailto:Laurie.larkin@eku.edu)

**Julie Lasslo, MPH**

Assistant Professor

Health Promotion & Administration

[Julie.lasslo@eku.edu](mailto:Julie.lasslo@eku.edu)

**Christie Green, MPH**

Adjunct Faculty/Public Information  
Officer

Health Promotion & Administration  
Madison County Health Department

[Christie.green@eku.edu](mailto:Christie.green@eku.edu)

## **COMMUNITY HEALTH OPTION COURSES (21 semester hours)**

HEA 820 - Global Health (3)

HEA 825 - Planning and Evaluation of CH Programs (3)

HEA 875 - Seminar in Contemporary Health Issues (3)

HEA 898 - Health Care Delivery (3)

HEA 880 - Scholarship in Community Health (3)

HEA 890 - Practicum in Community Health (3)

Approved Elective - (3)

## Environmental Health Science & Industrial Hygiene Option Faculty

**Vonia L. Grabeel, RS, MPH**  
Chair/Professor  
Environmental Health Science  
Dizney 221  
(859) 622-6359  
[vonia.grabeel@eku.edu](mailto:vonia.grabeel@eku.edu)

**Dr. Gary Brown CIH, RS, DAAS**  
EHS Coordinator/Professor  
Environmental Health Science  
Dizney 239  
(859) 622-1992  
[gary.brown@eku.edu](mailto:gary.brown@eku.edu)

**Dr. Darryl Barnett REHS, DAAS**  
Professor  
EHS Option (Dept. of EHS/MLS)  
[Db.barnett@eku.edu](mailto:Db.barnett@eku.edu)

**Dr. Jason Marion**  
Associate Professor  
EHS Option (Dept of EHS/MLS)  
[jason.marion@eku.edu](mailto:jason.marion@eku.edu)

**Dr. Clint Pinion**  
Assistant Professor  
EHS Option (Dept of EHS/MLS)  
[Clint.pinion@eku.edu](mailto:Clint.pinion@eku.edu)

**Dr. Jim Klyza**  
Assistant Professor  
IH Option (Dept of EHS/MLS)  
[jim.klyza@eku.edu](mailto:jim.klyza@eku.edu)

### **Environmental Health Science Option (21 semester hours)**

EHS 855 - Emergency Sanitation/Shelter/Environ. (3)  
EHS 865 - Environmental Toxicology (3)  
EHS 880 - Food/Waterborne Disease (3)  
EHS 863 - Field Experience in Environmental Health  
EHS 890 - Research Project (3)  
EHS 835 – Survey of Public Health Statistical Analysis (3)  
Approved Elective - (3)

### **Industrial Hygiene Option (21 semester hours)**

EHS 710 - Radiological Health  
EHS 840 - Industrial Hygiene Principles  
EHS 841 - Essentials of Industrial Hygiene  
EHS 865 - Environmental Toxicology EHS 875 -  
Principles of Ventilation  
EHS 885 - Crisis Mgmt., Risk Comm/Assessment  
EHS 835 – Survey of Public Health Statistical  
Analysis (3)  
Approved Elective – (3)

## **Public Health Nutrition Option Faculty**

**Dr. Dana Bush**  
Chair/Associate Professor  
Family & Consumer Sciences  
Burrier 102  
(859) 622-3445  
[dana.bush@eku.edu](mailto:dana.bush@eku.edu)

**Dr. Karina Christopher RD,  
LD**  
Assistant Professor  
Nutrition Option (Dept. of  
FCS)  
[karina.christopher@eku.edu](mailto:karina.christopher@eku.edu)

**Dr. Erin Eliassen, RD, LD**  
Associate Professor Nutrition Option  
[Erin.eliassen@eku.edu](mailto:Erin.eliassen@eku.edu)

**Rachel Harrington, MHA, RD, LD**  
Assistant Professor Nutrition Option  
[Rachel.harrington@eku.edu](mailto:Rachel.harrington@eku.edu)

### **Public Health Nutrition Option (21 semester hours)**

NFA 812 - Public Health Nutrition  
NFA 817 - Maternal, Infant, Child Nutrition  
NFA 805 - Nutrition for Health Promotion  
NFA 826 - Nutrition for Chronic Disease  
HEA 880 - Scholarship in Community Health  
Approved Elective (3)



## **Admission Policies**

The MPH Program seeks to admit students who demonstrate the potential to be successful in graduate school, and who are committed to the public health profession, as evidenced by their interests, backgrounds, and experiences. While relevant work experience in public health is not a requirement for admission to the Program, knowledge of core public health values is an important factor when considering applicants to the MPH Program. In addition to this, admission standards reflect the requirements of the Graduate School as well as specific requirements and the mission of the Program. For admission into the Program, applicants must meet the following minimum requirements:

1. Baccalaureate degree from an accredited institution with a GPA of 2.5 or better;
2. Combined score of at least 291 on the verbal and quantitative components of the Graduate Record Exam (GRE) with a minimum of 143 in each area, or a score of 385 on the Miller Analogies Test (MAT); Applicants with cumulative undergraduate GPA's of 3.0 or higher are exempt from this requirement.
3. Submission of graduate school application;
4. Submission of MPH Program application;
5. Submission of statement of personal and professional objectives (1½ to 2-pages);
6. Submission of three letters of recommendation from employers or previous professors; and
7. For International applicants, a TOEFL score of at least 580 for paper-based test and 237 for the computer-based version, or an IELTS minimum score of 5 on each section and a minimum score of 6 on the overall band score.

**Satisfying the minimum entrance requirements does not guarantee admission, which is made on a competitive basis, and is dependent on the faculty resources and the number of available slots for new candidates to enter the Program.**

*The MPH Program adheres to the University's Affirmative Action and Equal Opportunity policies in all its recruitment and admission activities. The Program recruits and admits qualified students regardless of race, ethnicity, religion, sex, sexual orientation, national origin, age, disability, or veteran's status. In line with the University's Strategic Plan, the Program is increasing its focus on recruiting minority students.*

## **Steps in Applying to the MPH Program**

Submit the following directly to the online portal used by the Graduate School:

- MPH application
- Statement of personal and professional objectives (1½ to 2-pages)
- Three letters of recommendation from employers and/or previous professors
- Graduate school application and related fee
- Official college/university transcripts
- Official GRE **or** MAT scores
- TOEFL score (International applicants)

For detailed information on the application process, please see **Section Four** of the Graduate Catalog:  
<http://catalogs.eku.edu/>

## **Application Deadlines**

**ALL MATERIALS MUST BE TO THE MPH OFFICE NO LATER THAN:**

**Fall admission: April 15 - international applicants  
July 1 - domestic applicants**

**Spring admission: Oct 15—domestic and international applicants**

*Applicants are encouraged to begin the application process at least 4 weeks (6 weeks for international applicants) prior to the deadline to ensure that all supporting materials are available by the deadline.*

## **Admission Procedures**

Once the Office of Graduate Education & Research has received and processed all application materials, the applicant's file is forwarded to the Program Director's office. The Director then notifies the applicant once the file has been received.

The *MPH Admissions Committee* meets each Fall and Spring semester approximately two weeks following the application deadlines listed above. To be considered during a review period, a completed file must be received in the graduate school office by the appropriate deadline.

The Program Director provides written notification to the Office of Graduate Education & Research regarding the Committee's decision for each applicant. The graduate school then sends official notice to the applicant. A follow up letter is also sent to the applicant from the Program Director regarding the *MPH Admissions Committee's* decision.

Successful applicants are mailed an ***Intent to Enroll*** form that must be completed and returned to the Program Director to confirm intention to enroll in the Program. Once this is returned, orientation materials are sent to the new student.

Individuals who accept entrance into the MPH Program are required to attend the *New Student Orientation* that is normally scheduled during the week prior to classes starting or during the first week of classes. This meeting is used to familiarize the students with the Program, as well as their respective options, and as an advising session to prepare the "planned program" of study.

## **Graduate Assistantships**

Graduate Assistantships are available on a **limited** basis and current students in the Program are generally given preference for these positions.

## **Advising**

Advising in the MPH Program provides an individual approach to the academic and professional development of each student. Upon admission to the Program, each student is assigned an advisor within his/her respective Program option.

## Master of Public Health Program Curriculum (43 semester credit hours)

### MPH Core (21 semester hours)

Course	Title	Credits
MPH 850	Introduction to Environmental Health Science	3
MPH 810	Human Behavior Change	3
MPH 816	Public Health Organization and Administration	3
MPH 830	Biostatistics	3
MPH 855	Principles of Epidemiology	3
MPH 800 <i>or</i> MPH 840	Research Methods in Environmental Health <i>or</i> Research Methods in Community Health	3
MPH 825	Environmental Health Planning	3

### MPH CAPSTONE (1 hour)

MPH 895	Public Health Capstone Course	1
---------	-------------------------------	---

Students must also choose from one of the options listed on the next few pages.

**Community Health Education Option (21 hours)**

**Required Courses (12 hours)**

HEA 820	Global Health	3
HEA 825	Planning & Evaluation of Community Health Programs	3
HEA 875	Seminar in Contemporary Health Issues	3
HEA 898	Health Care Delivery	3

**Practicum (3 hours)**

HEA 890	Practicum in Community Health	3
---------	-------------------------------	---

**Research (3 hours)**

HEA 880	Scholarship in Community Health	3
---------	---------------------------------	---

**One of the following Approved Electives (3 hours):**

HEA 791	Women's Health Issues	3
HEA 792	Human Sexuality	3
HEA 793	Death and Grief	3
HEA 795	Alcohol Abuse and Dependency	3
HEA 804	Drug Abuse and Dependency	3
HEA 856	Advanced Epidemiology	3
EHS 880	Food/Waterborne Disease Control	3
EHS 885	Crisis Management, Risk Communication/Assessment	3

**Environmental Health Science Option (21 hours)**

**Required Courses (12 hours)**

EHS 855	Emergency Sanitation/Shelter/Environments	3
EHS 865	Environmental Toxicology	3
EHS 880	Food/Waterborne Disease	3
EHS 835	Survey of Public Health Statistical Analysis	3

**Practicum (3 hours)**

EHS 863	Field Experience in Environmental Health	3
---------	--	---

**Research (3 hours)**

EHS 890	Research in Environmental Health Science	3
---------	--	---

**One of the following Approved Electives (3 hours):**

EHS 710	Radiological Health	3
EHS 730	Environmental Control of Disease Vectors	3
EHS 840	Industrial Hygiene Principals	3
EHS 841	Essentials of Industrial Hygiene	3
EHS 875	Principles of Ventilation	3
EHS 885	Crisis Management, Risk Communication/Assessment	3

**Industrial Hygiene Graduate Certificate\* (18 hours)**

EHS 710	Radiological Health	3
EHS 840	Industrial Hygiene Principals	3
EHS 841	Essentials of Industrial Hygiene	3
EHS 865	Environmental Toxicology	3
EHS 875	Principles of Ventilation	3
EHS 885	Crisis Management, Risk Communication/Assessment	3

\*The certificate program is designed for both degree-seeking and Certificate-seeking students. The number of credit hours required for completion is 18 hours of which 9 hours can be used as electives in the MPH-EHS graduate program, Environmental Health or Industrial Hygiene Concentrations. Students must have a minimum of 12 hours of biology and/or chemistry courses in order to be admitted.

**Industrial Hygiene Option (21 hours)**

**Required Courses (12 hours)**

EHS 840	Industrial Hygiene Principals	3
EHS 841	Essentials of Industrial Hygiene	3
EHS 865	Environmental Toxicology	3
EHS 835	Survey of Public Health Statistical Analysis	3

**Practicum (3 hours)**

EHS-863	Field Experience in Environmental Health	3
---------	--	---

**Research (3 hours)**

EHS 890	Research in Environmental Health Science	3
---------	--	---

**One of the following Approved Electives (3 hours):**

EHS 710	Radiological Health	3
EHS 860	Air Quality and Health	3
EHS 875	Principles of Ventilation	3
EHS 885	Crisis Management, Risk Communication/Assessment	3

**Public Health Nutrition Option (21 hours)**

**Required Courses\* (12 hours)**

NFA 805	Nutrition for Health Promotion	3
NFA 812	Public Health Nutrition	3
NFA 817	Maternal, Infant, Child Nutrition	3
NFA 826	Nutrition for Chronic Disease	3

**Practicum (3 hours)**

NFSA 840	Public Health Nutrition Practicum	3
----------	-----------------------------------	---

**Research (3 hours)**

HEA 880	Scholarship in Community Health	3
---------	---------------------------------	---

**One of the following Approved Electives (3 hours):**

HEA 791	Women's Health Issues	3
HEA 792	Human Sexuality	3
HEA 793	Death and Grief	3
HEA 795	Alcohol Abuse and Dependency	3
HEA 804	Drug Abuse and Dependency	3
HEA 856	Advanced Epidemiology	3
EHS 880	Food/Waterborne Disease Control	3
EHS 885	Crisis Management, Risk Communication/Assessment	3
MPH 895	Public Health Capstone Course	1

**\*NFA courses required for Public Health Nutrition concentration are only offered as follows:**

Odd Fall: NFA 812: Public Health Nutrition

Odd Spring: NFA 817: Maternal, Infant, Child Nutrition Even Fall: NFA 826: Nutrition for Chronic Disease

Even Spring: NFA 805: Nutrition for Health Promotion

**Total MPH Program Hours = 43 credit hours**

## Core Course Descriptions

<b>Core Courses (21 credit hours)</b>
<p><b>MPH 850-Introduction to Environmental Health Science (3 credit hours)</b> Study of the effects of the environment on personal and public health related to water and waste water treatment, air pollution, food hygiene, disease vectors, waste disposal, radiation, noise, institutions etc. as they link to chronic and communicable diseases.</p>
<p><b>MPH 810-Human Behavior Change (3 credit hours)</b> Examines selected theories and models of health behavior relevant to health promotion in individuals and communities. Students will analyze biological, psychological, sociological, and environmental influences on behavior, and evaluate strategies for health promotion.</p>
<p><b>MPH 816-Public Health Organization and Administration (3 credit hours)</b> An in-depth exploration of the public health: its historical basis; contributions to improvement in health; the organizational structure of public health at the local, state, and national levels; involvement of local, state and federal government in public health; management of public health resources including human resources; identification of relationship of public health alliances such as public health officials with managed care; and the future of public health in the United States. In addition, an investigation of current public health issues and efforts ameliorate public health concerns, with an emphasis on preventive approaches. Disease base-lining, preventive methods and public accountability will be emphasized in this course.</p>
<p><b>MPH 830-Biostatistics (3 credit hours)</b> This course is an introduction to basic concepts of statistics as applied to public health. Major topics to be covered include descriptive statistics, theoretical distributions, probability, estimation, hypothesis testing, correlation, analysis of variance, and regression.</p>
<p><b>MPH 855-Principles of Epidemiology (3 credit hours)</b> This course is a study of the distribution and determinants of disease and injury. Research methodologies for human research and disease surveillance techniques will be emphasized.</p>
<p><b>MPH 800- Environmental Health Research Process (3 credit hours)</b> Provides the student with an in-depth exploration of the public health/ environmental health paradigm, using instruction and hands-on experience in the application of quantitative and qualitative analysis in the public and environmental health arena. <i>(for EH students)</i> <b>OR</b></p>
<p><b>MPH 840-Research Methods in Community Health (3 credit hours)</b> Emphasis will be on identifying a community health research problem, constructing hypotheses, selecting a research design and statistical analyses, and interpreting the findings of the study. <i>(for CH students)</i></p>
<p><b>MPH 825 Environmental Health Planning (3 credit hours)</b> The study of the planning tools required for administration and implementation of environmental health Programs.</p>
<p><b>MPH 895: Public Health Capstone Course.</b> (1) This capstone course will allow students the opportunity to integrate and apply competencies acquired through the MPH program to problems likely to be encountered in public health practice. The course is designed to partially meet the culminating experience requirement for students in the program.</p>



## Other Course Descriptions

### *MPH Capstone (Required for all MPH Students)*

#### ***Community Health Education Option***

**HEA 791: Women's Health.** (3) Analysis of the major health problems of contemporary women with special emphasis on health promotion, disease prevention, and consumer health concerns.

**HEA 792: Human Sexuality.** (3) Study of the biological, social, and psychological aspects of human sexuality. Directed primarily toward those individuals in situations, which require them to assist others in understanding the broad impact of one's sexuality. Emphasis is placed upon student development of logical and reasoned justifications for their own value system.

**HEA 795: Alcohol Abuse and Dependency.** (3) Study of the impact of alcohol related attitudes and behaviors on individuals and society. Includes study of influences on choices about alcohol, behavior change strategies, prevention, intervention, and treatment.

**HEA 793: Death and Grief.** (3) A study of attitudes, behaviors, and issues concerning death and grief. Topics include responses to death and grief throughout the life cycle; process of grief and bereavement; theology and death; legal aspects of dying; care of the dying; suicide; post-mortem care; death education.

**HEA 804: Drug Abuse and Dependency.** (3) Study of the nature and progression of chemical abuse and dependency, and effects on the individual, family, and society. Includes study of strategies for prevention, intervention, and treatment.

**HEA 820: Global health.** (3) Overview of the relationship between epidemiological, economic, political, sociological and cultural factors that impact global health. Special emphasis is on methods of prevention/intervention utilized in coping with health problems on an international level.

**HEA 856: Applied Epidemiology.** (3) An applied epidemiology course with emphasis on field investigations, public health surveillance, surveys and sampling, use of computers in epidemiology, descriptive epidemiology, designing studies, analysis, interpretation and communication of data, and intervention/control measures.

**HEA 875: Seminar in Contemporary Health Problems.** (3) Opportunity for in-depth study of current health problems and issues utilizing guest speakers as the primary source of information.

**HEA 880: Scholarship in Community Health.** (3) Applied scholarship experience demonstrating synthesis and integration of advanced knowledge and skills in Community Health. Student must have approval of department prior to enrollment.

**HEA 898: Health Care Delivery.** (3) This course will provide a general survey of the various health professions, role of comprehensive health planning concepts, and the role of the health professional in the health care delivery system.

**HEA 890: Practicum in Community Health.** (3) Student will be placed in a supervised work environment in community health.

## ***Environmental Health Science Option***

**EHS 710: Radiological Health (3).** Provides the student with the principles of health effects from ionizing radiation, including radiation sources, detection, measurement, control, and safety devices. Student will be able to identify, evaluate and control radiation in the work environment; implement a radiation monitoring program; establish emergency plans for actions to be taken in event of radiological accident; develop risk assessment and communication program.

**EHS 730: Environmental Control of Disease Vectors (3).** The student will acquire an understanding of the principles of identification, evaluation, and control of vectors, and vector borne diseases of public health concern including pesticides and their safe use.

**EHS 800: Environmental Health Research Process (3).** Provides the student with an in-depth exploration of the public health/environmental health paradigm, using instruction and hands-on experience in the application of quantitative and qualitative analysis in the public and environmental health arena.

**EHS 825: Environmental Health Planning (3).** The study of the planning tools required for the administration and implementation of environmental health Programs.

**EHS 835 - Survey of Public Health Statistical Analysis (3).** A survey course of the commonly used environmental public health statistical programs for analysis of data including SPSS, SAS, Minitab, and Stata. Emphasis placed on applying statistical analysis using environmental health data.

**EHS 840: Industrial Hygiene Principles (3).** A study of the impact of the workplace on workers' health and the control of causative factors of disease.

**EHS 841: Essentials of Industrial Hygiene. (3).** Identify primary sources of potential chemical, physical and biological agents, identify techniques for assessing the risk of worker exposures and understand health impacts of occupational exposures to workers.

**EHS 855: Emergency Sanitation & Shelter Environments (3).** The course will cover many types of both natural man-made disasters and will focus on the provision of preventive disease processes, safe food, water and shelter.

**EHS 860: Air Quality and Health (3).** Study of health impacts of air pollution from both outdoor and indoor sources. The course will also provide information about the various methods of reducing, control and elimination of air pollution.

**EHS 863: Field Experience in Environmental Health (3).** Supervised and directed field experience at official agencies at any level of government (state, local or national) or with private industry. The course administrator must approve all field-training sites before selection or assignment.

**EHS 865: Environmental Toxicology (3).** Toxicology, the principles, concepts and thinking that are its foundation. The course addresses mechanisms by which the substances enter the cells of the body, physiological processes, target organs, classes of toxic substances, and potential exposures.

**EHS 875: Principles of Ventilation (3).** Provides the student with the principles of ventilation including: design of fans, cleaners duct sizing; calculations, inspections, balancing the system, and overall maintenance. This course deals with use of ventilation to reduce or eliminate occupational exposures in the workplace.

**EHS 880: Food and Waterborne Disease Control (3).** The management of safety and disease hazards inherent in administering community Programs of food hygiene, water and wastewater.

**EHS 885: Crisis Management, Risk Communication/Assessment (3).** Provides the student with the principles of Crisis Management and Risk Communication/Assessment by becoming familiar with laws that mandate risk communication, types and approaches to risk communication, effective risk communication, importance of crisis management/communication, process of hazard risk assessment, and benefits of development and implementation of an emergency response program.

**EHS 890: Graduate Project in Environmental Health. (3)** Research into a special topic in Environmental Health. Student must have approval of course faculty.

## ***Industrial Hygiene Option***

**EHS 710: Radiological Health (3).** Provides the student with the principles of health effects from ionizing radiation, including radiation sources, detection, measurement, control, and safety devices. Student will be able to identify, evaluate and control radiation in the work environment; implement a radiation monitoring program; establish emergency plans for actions to be taken in event of radiological accident; develop risk assessment and communication program.

**EHS 800: Environmental Health Research Process (3).** Provides the student with an in-depth exploration of the public health/ environmental health paradigm, using instruction and hands-on experience in the application of quantitative and qualitative analysis in the public and environmental health arena.

**EHS 825: Environmental Health Planning (3).** The study of the planning tools required for the administration and implementation of environmental health Programs.

**EHS 835 - Survey of Public Health Statistical Analysis (3).** A survey course of the commonly used environmental public health statistical programs for analysis of data including SPSS, SAS, Minitab, and Stata. Emphasis placed on applying statistical analysis using environmental health data.

**EHS 840: Industrial Hygiene Principles (3).** A study of the impact of the workplace on workers' health and the control of causative factors of disease.

**EHS 841: Essentials of Industrial Hygiene. (3).** Identify primary sources of potential chemical, physical and biological agents, identify techniques for assessing the risk of worker exposures and understand health impacts of occupational exposures to workers.

**EHS 860: Air Quality and Health (3).** Study of health impacts of air pollution from both outdoor and indoor sources. The course will also provide information about the various methods of reducing, control and elimination of air pollution.

**EHS 863: Field Experience in Environmental Health (3).** Supervised and directed field experience at official agencies at any level of government (state, local or national) or with private industry. The course administrator must approve all field-training sites before selection or assignment.

**EHS 865: Environmental Toxicology (3).** Toxicology, the principles, concepts and thinking that are its foundation. The course addresses mechanisms by which the substances enter the cells of the body, physiological processes, target organs, classes of toxic substances, and potential exposures.

**EHS 875: Principles of Ventilation (3).** Provides the student with the principles of ventilation including: design of fans, cleaners duct sizing; calculations, inspections, balancing the system, and overall maintenance. This course deals with use of ventilation to reduce or eliminate occupational exposures in the workplace.

**EHS 885: Crisis Management, Risk Communication/Assessment (3).** Provides the student with the principles of Crisis Management and Risk Communication/Assessment by becoming familiar with laws that mandate risk communication, types and approaches to risk communication, effective risk communication, importance of crisis management/communication, process of hazard risk assessment, and benefits of development and implementation of an emergency response program.

**EHS 890: Graduate Project in Environmental Health (3).** Research into a special topic in Environmental Health. Students must have approval of course faculty.

## ***Public Health Nutrition Option***

**NFA 812: Public Health Nutrition (3).** Critical review of public health nutrition services that impact communities. Utilization of federal, state and local data and programs to conduct assessments and plan interventions. Application of administrative principles to program management.

**NFA 817: Maternal, Infant, Child Nutrition (3).** Review and application of nutritional recommendations and requirements specific to maternal, infant, child populations for implementation and evaluation of nutrition related programs. Study of feeding practices and their impact on health from birth through childhood.

**NFA 805: Nutrition for Health Promotion (3).** Review and application of nutrition guidelines for program planning and evaluation in health promotion and disease prevention. Study of common eating behaviors and practices and their influence on health and nutrition.

**NFA 826: Nutrition for Chronic Disease (3).** Pre-requisite: NFA 201 or Departmental Approval. Critical review of chronic disease incidence and risk factors with an emphasis on the role of nutrition for the management of chronic disease through community based programming.

**HEA 880: Scholarship in Community Health (3).** Applied scholarship experience demonstrating synthesis and integration of advanced knowledge and skills in Public Health Nutrition. Student must have approval of department prior to enrollment.

**NFA 840: Public Health Nutrition Practicum (3).** Supervised and directed public health nutrition field experience in a community, government, or private agency or organization.

EASTERN KENTUCKY UNIVERSITY  
**MPH PLANNED PROGRAM FORM**

Name \_\_\_\_\_ Address \_\_\_\_\_

ID# \_\_\_\_\_ Phone \_\_\_\_\_ E-Mail \_\_\_\_\_

**Degree:** Master of Public Health with an emphasis in Community Health Education

Signature of Student \_\_\_\_\_ Date \_\_\_\_\_ Signature of Advisor \_\_\_\_\_ Date \_\_\_\_\_

Note: Program changes must be approved using the "Application for a Change in the Planned Program" form

**EKU GRADUATE CREDIT**

Course Number and Title	Credit Hours	Grade	Date Completed	Change/Comments
<b>MPH CORE</b> .....	<b>21 hours</b>			
MPH 810-Human Behavior Change	3	_____	_____	_____
MPH 816-Public Health Organization & Administration	3	_____	_____	_____
MPH 830-Biostatistics	3	_____	_____	_____
MPH 840-Research Methods in Community Health	3	_____	_____	_____
MPH 855-Principles of Epidemiology	3	_____	_____	_____
MPH 850-Introduction to Environmental Health	3	_____	_____	_____
MPH 825-Environmental Health Planning	3	_____	_____	_____
<b>COMMUNITY HEALTH REQUIRED COURSES</b> .....	<b>12 hours</b>			
HEA 820-Global Health	3	_____	_____	_____
HEA 825-Planning & Evaluation of Community Health Programs	3	_____	_____	_____
HEA 875-Seminar in Contemporary Health Issue	3	_____	_____	_____
HEA 898-Health Care Delivery	3	_____	_____	_____
<b>RESEARCH</b> .....	<b>3 hours</b>			
HEA 880-Scholarship in Community Health	3	_____	_____	_____
<b>ELECTIVE</b>				
<b>Choose one of the following approved electives:</b>				
<i>HEA 791, 792, 793, 795, 804, 856, EHS 880, or POL 877</i>				
_____	3	_____	_____	_____
<b>PRACTICUM</b> .....	<b>3 hours</b>			
HEA 890-Practicum in Community Health	3	_____	_____	_____
<b>CAPSTONE</b> .....	<b>1 hour</b>			
MPH 895-Public Health Capstone Course	1	_____	_____	_____

TOTAL GRADUATE PROGRAM HOURS: 43 Anticipated Date of Graduation: \_\_\_\_\_

PLANNED CURRICULUM APPROVALS \_\_\_\_\_  
 \_\_\_\_\_ Advisor \_\_\_\_\_ Date

MPH Program Director \_\_\_\_\_ Date \_\_\_\_\_

**TIME LIMIT: This program must be completed within 7 years to avoid losing course credits.**

EASTERN KENTUCKY UNIVERSITY  
**MPH PLANNED PROGRAM FORM**

Name \_\_\_\_\_ Address \_\_\_\_\_

ID# \_\_\_\_\_ Phone \_\_\_\_\_ E-Mail \_\_\_\_\_

**Degree:** Master of Public Health with an emphasis in Environmental Health Science

Signature of Student \_\_\_\_\_ Date \_\_\_\_\_ Signature of Advisor \_\_\_\_\_ Date \_\_\_\_\_

Note: Program changes must be approved using the "Application for a Change in the Planned Program" form

**EKU GRADUATE CREDIT**

Course Number and Title	Credit Hours	Grade	Date Completed	Change/Comments
<b>MPH CORE.....</b>	<b>21 hours</b>			
MPH 810-Human Behavior Change	3	_____	_____	_____
MPH 816-Public Health Organization & Administration	3	_____	_____	_____
MPH 830-Biostatistics	3	_____	_____	_____
MPH 800-Research Methods	3	_____	_____	_____
MPH 855-Principles of Epidemiology	3	_____	_____	_____
MPH 850-Introduction to Environmental Health	3	_____	_____	_____
MPH 825-Environmental Health Planning	3	_____	_____	_____
<b>ENVIRONMENTAL HEALTH REQUIRED COURSES.....</b>	<b>12 hours</b>			
EHS 855- Emergency Sanitation & Shelter Environments	3	_____	_____	_____
EHS 865 – Environmental Toxicology	3	_____	_____	_____
EHS 880- Food/Waterborne Disease Control	3	_____	_____	_____
EHS 835 - Survey of Public Health Statistical Analysis	3	_____	_____	_____
<b>RESEARCH.....</b>	<b>3 hours</b>			
EHS 890- Graduate Research in EHS	3	_____	_____	_____
<b>ELECTIVES.....</b>	<b>3 hours</b>			
<b>Choose one of the following approved electives:</b>				
<i>EHS 710, 730, 840, 841, 860, 875, 885</i>				
_____	<b>3 hours</b>	_____	_____	_____
<b>PRACTICUM.....</b>	<b>3 hours</b>			
EHS 863-Practicum in Environmental Health	3	_____	_____	_____
<b>CAPSTONE.....</b>	<b>1 hour</b>			
MPH 895-Public Health Capstone Course	1	_____	_____	_____

TOTAL GRADUATE PROGRAM HOURS: 43 Anticipated Date of Graduation: \_\_\_\_\_

PLANNED CURRICULUM APPROVALS \_\_\_\_\_

Advisor

Date

MPH Program Director \_\_\_\_\_

Date

**TIME LIMIT: This program must be completed within 7 years to avoid losing course credits.**

EASTERN KENTUCKY UNIVERSITY  
**MPH PLANNED PROGRAM FORM**

Name \_\_\_\_\_ Address \_\_\_\_\_

ID# \_\_\_\_\_ Phone \_\_\_\_\_ E-Mail \_\_\_\_\_

**Degree:** Master of Public Health with an emphasis in Industrial Hygiene

Signature of Student \_\_\_\_\_ Date \_\_\_\_\_ Signature of Advisor \_\_\_\_\_ Date \_\_\_\_\_

Note: Program changes must be approved using the "Application for a Change in the Planned Program" form

**EKU GRADUATE CREDIT**

Course Number and Title	Credit Hours	Grade	Date Completed	Change/Comments
<b>MPH CORE</b> .....	<b>21 hours</b>			
MPH 810-Human Behavior Change	3	_____	_____	_____
MPH 816-Public Health Organization & Administration	3	_____	_____	_____
MPH 830-Biostatistics	3	_____	_____	_____
MPH 800-Research Methods	3	_____	_____	_____
MPH 855-Principles of Epidemiology	3	_____	_____	_____
MPH 850-Introduction to Environmental Health	3	_____	_____	_____
MPH 825-Environmental Health Planning	3	_____	_____	_____
<b>INDUSTRIAL HYGIENE REQUIRED COURSES</b> .....	<b>12 hours</b>			
EHS 840 - Industrial Hygiene Principles	3	_____	_____	_____
EHS 841- Essentials of Industrial Hygiene	3	_____	_____	_____
EHS 865 – Environmental Toxicology	3	_____	_____	_____
EHS 835 - Survey of Public Health Statistical Analysis	3	_____	_____	_____
<b>RESEARCH</b> .....	<b>3 hours</b>			
EHS 890- Graduate Research in EHS	3	_____	_____	_____
<b>ELECTIVES</b> .....	<b>3 hours</b>			
<i>Choose two of the following approved electives:</i>				
<i>EHS 710, 860, 875, 885</i>				
	3 hours	_____	_____	_____
<b>PRACTICUM</b> .....	<b>3 hours</b>			
EHS 863-Practicum in Environmental Health	3	_____	_____	_____
<b>CAPSTONE</b> .....	<b>1 hour</b>			
MPH 895-Public Health Capstone Course	1	_____	_____	_____

TOTAL GRADUATE PROGRAM HOURS: 43 Anticipated Date of Graduation: \_\_\_\_\_

PLANNED CURRICULUM APPROVALS \_\_\_\_\_

Advisor

Date

\_\_\_\_\_  
MPH Program Director

Date

**TIME LIMIT: This program must be completed within 7 years to avoid losing course credits.**

EASTERN KENTUCKY UNIVERSITY  
**MPH PLANNED PROGRAM FORM**

Name \_\_\_\_\_ Address \_\_\_\_\_

ID# \_\_\_\_\_ Phone \_\_\_\_\_ Email \_\_\_\_\_

**Master of Public Health** with an emphasis in **Public Health Nutrition**

Signature of Student \_\_\_\_\_ Date \_\_\_\_\_ Signature of Advisor \_\_\_\_\_ Date \_\_\_\_\_

Note: Program changes must be approved using the "Application for a Change in the Planned Program" form

**EKU GRADUATE CREDIT**

Course Number and Title	Credit Hours	Grade	Date Completed	Change/Comments
<b>MPH CORE.....</b>	<b>21 hours</b>			
MPH 810-Human Behavior Change	3	_____	_____	_____
MPH 816-Public Health Organization & Administration	3	_____	_____	_____
MPH 830-Biostatistics	3	_____	_____	_____
MPH 840-Research Methods in Community Health	3	_____	_____	_____
MPH 855-Principles of Epidemiology	3	_____	_____	_____
MPH 850-Introduction to Environmental Health	3	_____	_____	_____
MPH 825-Environmental Health Planning	3	_____	_____	_____
<b>PUBLIC HEALTH NUTRITION REQUIRED COURSES.....</b>	<b>12 hours</b>			
NFA 805-Nutrition for Health Promotion	3	_____	_____	_____
NFA 812-Public Health Nutrition	3	_____	_____	_____
NFA 817-Maternal, Infant, Child Nutrition	3	_____	_____	_____
NFA 826-Nutrition for Chronic Disease	3	_____	_____	_____
<b>RESEARCH.....</b>	<b>3 hours</b>			
HEA 880-Scholarship in Community Health	3	_____	_____	_____
<b>ELECTIVE</b>				
<b>Choose one of the following approved electives:</b>				
<i>HEA 791, 792, 793, 795, 804, 856, EHS 880, or POL 877</i>	3	_____	_____	_____
<b>PRACTICUM.....</b>	<b>3 hours</b>			
HEA 890-Practicum in Community Health	3	_____	_____	_____
<b>CAPSTONE.....</b>	<b>1 hour</b>			
MPH 895-Public Health Capstone Course	1	_____	_____	_____

TOTAL GRADUATE PROGRAM HOURS: 43 Anticipated Date of Graduation: \_\_\_\_\_

PLANNED CURRICULUM APPROVALS \_\_\_\_\_  
 \_\_\_\_\_ Advisor \_\_\_\_\_ Date

MPH Program Director \_\_\_\_\_ Date

**TIME LIMIT: This program must be completed within 7 years to avoid losing course credits.**



## Student Grievances Regarding Course Grades

The following statement describes the manner in which student grievances about a grade are addressed. This statement is included in the *MPH Policies and Procedures Manual*, *MPH Student Handbook*, and *EKU Student Handbook*.

*Students are to first register a grievance about a course grade with the appropriate faculty member. If a grade is challenged and satisfaction is not reached with the faculty member, the student files a complaint/grievance with the Department Chair. If a resolution is not reached, the grievance is referred to the departmental Academic Practices Committee (elected faculty, and student representative). If satisfaction is not reached through that process, the student can subsequently submit the grievance through the administrative line to the Dean, the Provost, and the President.*

*Note: A written appeal must be filed with the Chair within 30 days after the beginning of the next semester (exclusive of intersession and summer session).*

## Program Conclusion

### **Practicum**

All students must complete 30 hours to include the core courses and pass the core exam before registering for the Practicum course (HEA 890 or EHS 863). All students complete a 240-hour practical experience in a public/occupational health setting under the mentorship of a faculty member and the supervision of an on-site public/occupational health professional. For a complete description of the practicum requirements see **MPH Practicum Manual** at [www.mph.eku.edu](http://www.mph.eku.edu) under Student Resources link.

### **Culminating Experience**

The culminating experience occurs through a three-tiered process. Students must satisfactorily:

1. Execute a scholarship/research project in a research course, and achieve a passing grade for the course.
2. Complete MPH 895, the MPH Capstone Course (1 credit hour).
3. Present their scholarship/research project in a way that demonstrates knowledge and mastery of selected public health objectives and competencies, and must achieve a passing score for the presentation.

Each of these components is described in more detail below.

#### ***Execute a Research/Scholarship Project***

Each student must satisfactorily execute a scholarship/research project through one of these courses, and achieve a passing grade in the course:

- CHE: HEA 880 Scholarship in Community Health (3 hrs.)
- NFA: HEA 880 Scholarship in Community Health (3 hrs.)
- EHS: EHS 890 Graduate Project in EHS (3 hrs.)

Some aspect of the culminating experience must be original, whether it is the topic itself, an analysis of newly collected or extant data, the reinterpretation of others' findings, or the design and completion of a community project.

Through this scholarship/research experience the student must demonstrate proficiency with core and option specific competencies which are selected in collaboration with the course instructor. Thus the student must synthesize and integrate advanced knowledge and skills acquired in the Program, and apply those to some aspect of public health specific to community health education, environmental health science, or public health nutrition.

The faculty member who teaches the projects course supervises the students' work (although in some cases more than one faculty member might collaborate to supervise the scholarship/research). For the projects courses, students prepare a scholarship/research proposal, showing the way in which the project addresses the identified public health objectives and competencies. A committee of two faculty for projects

is formed early in the semester, and these faculty review the student's proposal for a study, particularly looking for the way in which it addresses the chosen public health objectives and competencies. Faculty who direct the scholarship also help orient students to the culminating experience presentation, and promote attendance at those given by other students during the semester.

HEA 880 and EHS 890 courses are the project courses and receive three hours credit plus an elective to equal six hours. The syllabi for HEA 880 and EHS 890 are on the Program website (<http://www.mph.eku.edu/Curriculum/>).

Prior to registering for the MPH Capstone course (MPH 895), students must successfully complete a minimum of 30 credit hours to include the five public health core courses (MPH 810, 816, 830, 855, and 850) and the research project course (HEA 880 or EHS 890).

### ***Satisfactorily Complete MPH 895 (Capstone Course)***

Each student must complete MPH 895, the MPH Capstone Course, and achieve a passing grade for the course. Through this course, students further analyze how their research/scholarship project demonstrates Program educational objectives and competencies, and they prepare a presentation of their project that demonstrates their knowledge and mastery of these objectives and competencies. (See the MPH 895 syllabus on the Program website <http://www.mph.eku.edu/Curriculum/>.)

### ***Present the Research/Scholarship Project***

All students must present their research/scholarship project that demonstrates their knowledge and mastery of selected public health objectives and competencies, and they must achieve a passing score for the presentation. At the end of each fall and spring semester, the MPH Director schedules times for students to present their research/scholarship. The following procedures are utilized:

1. The presentations are announced and open to all College faculty and graduate students as well as invited practitioners.
2. Faculty members from each option and students/peers evaluate each presenter. During the presentation, the audience uses a standard rubric to evaluate the culminating experience and presentation against the MPH Program educational goals and competencies. The overall quality of the presentation is also evaluated in terms of organization, completeness, scope, and evidence of professional growth. Students gain an understanding of the rubric in the capstone course (MPH 895).
3. The MPH Director collects and summarizes the evaluations. Copies of such for each presenter are then provided to the supervising faculty member who meets with the student to review and discuss the overall evaluation.
4. A pass or fail grade is assigned for the culminating experience and is based only on evaluations by faculty. This information is also reported to the graduate school as an "oral comprehensive exam." Therefore, students who do not pass are not cleared for graduation. If a student fails, s/he is allowed a second attempt, failure of which is considered a failure of the Program. The MPH Director provides a summary report of evaluations of student presentations to the MPH Assessment Committee (AC) and to faculty and others at the annual Program Retreat. Subsequently, the AC reports to the MPH Curriculum Committee regarding compliance with Program culminating experience requirements.
5. During their course of study, all MPH Program students are expected to attend culminating experience presentations, and to complete and submit at least two evaluations. To be peer evaluators, students must have completed 18 credit hours in the MPH Program.

### **Applying for Graduation**

For steps on applying Graduation go to: <http://www.gradschool.eku.edu/>

Online applications for graduation are generally due to the graduate school at the end of the semester prior to the semester the student will be graduating or very early in the semester the student will graduate. **As a student is nearing the end of his/her program, it is imperative that he/she become familiar with graduation application due dates as these are firm!**

## **Appendix A: Program Competencies**

- Appendix A-1: Master of Public Health Core Course Competencies Appendix A-2: Competencies in the ECU MPH Program: Community Health Education Option**
- Appendix A-3: Environmental Health Science and Protection Accreditation Council (EHAC) Competencies in the ECU MPH Program: Environmental Health Science Option**
- Appendix A-4: Environmental Health Science and Protection Accreditation Council (EHAC) Competencies in the ECU MPH Program: Industrial Hygiene Option**
- Appendix A-5: Competencies in the ECU MPH Program: Public Health Nutrition**

## **Appendix A-1: Master of Public Health Core Competencies**

Upon graduation, an MPH student should be able to...

### **Biostatistics**

- Interpret results of statistical analyses found in public health studies.

### **Epidemiology**

- Draw appropriate inferences from epidemiologic data.
- Apply basic ethical and legal principles to the collection, maintenance, use and dissemination of epidemiologic data.

### **Health Policy and Management**

- Apply the principles of program planning, development, budgeting, management and evaluation in organizational and community initiatives.

### **Social and Behavior Sciences**

- Apply evidence-based approaches in the development and evaluation of social and behavioral science interventions.

### **Program Planning**

- In collaboration with others, prioritize individual, organizational, and community concerns and resources for public health programs.

### **Environmental Health-**

- Understand the essentials of the risk and solution to biological, chemical, radiological threats to the health and wellbeing of individuals and communities.

### **Leadership**

- Understand and develop the ability to produce influence and produce change and progress toward a goal or vision.

### **Professionalism**

- Be able to undertake a specialized set of tasks and to complete them within a frame work of established ethics and evidence based principles that Promote high standards of personal and organizational integrity, compassion, honesty and respect for all people.

### **Systems Thinking**

- Be able to analyze the process of how things influence one another within a whole. In nature, systems thinking examples include ecosystems in which various elements such as air, water, movement, plants, and animals work together to survive or perish. In organizations, systems consist of people, structures, and processes that work together to make an organization healthy or unhealthy.

### **Public Health Biology**

- Acquire the ability to incorporate public health biology – the biological and molecular context of public health – into public health practice.

A-1.1

MPH Core Courses & Capstone experiences by which the MPH core competencies are met

Core Public Health Competencies	EHS 850: Introduction to Env. Health Science	HEA 810: Human Behavior Change	HEA 816: Public Health Org. & Admin	HEA 830: Biostatistics	HEA 855: Principles of Epidemiology	EHS 800/ Research Methods EHS	HEA 840: Research Methods CHE	EHS 825: Env Health Planning	MPH 895: Public Health Capstone
Biostatistics		R	R	P	P	R	P		P
Epidemiology: A		R	R	P	P		P		P
Epidemiology: B		R		R	R		P		P
Health Policy		R	P						P
Social and Behavior Science		R			R	R	R		P
Program Planning		R	P		R	R	R	P	P
Environmental Health	P								P
Leadership		P	P	R	R	R	R	R	P
Professionalism	R			R	R		P	R	P
Systems Thinking			R		R	P			P
Public Health Biology	R				R	R			P

- P=Primary, R=Reinforcing

## Appendix A-2: Competencies in the ECU MPH Program: Community Health Education Option

In addition to the MPH Core Competencies, upon graduation a student with an MPH in Community Health Education should be able to...

1. Identify the main components and issue of the organization, financing and delivery of health services and public health systems in the US.
2. Demonstrate effective written and oral skills for communicating with different audiences in the context of professional public health activities.
3. Develop public health programs and strategies responsive to the diverse cultural values and traditions of the communities being served.
4. Prepare a program budget with justification.

### A-2.1

#### MPH-CHE Option Courses/Experiences by which the MPH core competencies are met

MPH-CHE Option Courses and Experiences													
Core Public Health Competencies	HEA 820: Global Health	HEA 825: Planning & Eval of CH Programs	HEA 875: Seminary in Cont Health Issues	HEA 898: Health Care Delivery	HEA 791: Women's Health	HEA 792: Human Sexuality	HEA 793: Death and Grief	HEA 795: Alcohol Abuse/Dependency	HEA 804: Drug Abuse & Dependency	HEA 856: Applied Epidemiology	HEA 880: Scholarship in Community Health	HEA 890: Practicum in Community Health	MPH 895: PH Capstone
Biostatistics	R	R		P	R	R	R	P	P	P	P	P	
Epidemiology: A	R	P		P	R		R	P	P	P	P	P	
Epidemiology: B		P			R					P	P	P	
Health Policy		P	R								P	P	
Social and Behavior Science		P	P								P	P	
Program Planning	P	P	R		P	R				R	P	P	
Environmental						R				P		R	
Leadership	R	P						R	R	R	P	P	
Professionalism		R			R			R	R	P	P	P	
Systems Thinking	P	P	R							P	P	P	
Public Health Biology										R	R	R	

- P=Primary, R=Reinforcing

A-2.2

**MPH-CHE Option Courses/Experiences by which the Community Health option specific competencies are met**

<b>MPH in Community Health Competencies</b>	<b>HEA 820: Global Health</b>	<b>HEA 825: Planning and Evaluation</b>	<b>HEA 875; Seminar in Contemporary Issues</b>	<b>HEA 898 : Health Care Delivery</b>	<b>HEA 791: Women's</b>	<b>HEA 792: Human Sexuality</b>	<b>HEA 793: Death and Grief</b>	<b>HEA 795: Alcohol Abuse &amp; Dependency</b>	<b>HEA 804: Drug Abuse &amp; Dependency</b>	<b>HEA 856: Applied Epidemiology</b>	<b>HEA 880*: Scholarship in Community Health</b>	<b>HEA 890*: Practicum in Community Health</b>	<b>MPH 895: Capstone</b>
Collect Quantitative and/or Qualitative Data Related to Health		P						R	P	R	P	P	
Infer Needs for Health Education Based on Assessment Findings		P	R	R	R	R		P	P	P	P	P	
Select or Design Strategies and Interventions		P			R	R	R		R	R	P	P	
Implement a Plan of Action		R									P	P	
Collect and Analyze Evaluation/Research Data	P	P			P	R					P	P	
Apply Findings From Evaluation/Research	P	P	P	P	P	P	R	P	P	P	P	P	P
Assess capacity of potential partner(s) to meet program goals		R			R					R	P	P	
Provide Expert Assistance in Community Health	R	R			R	R					P	P	P
Demonstrate skills to influence			R	R							P	P	P
Deliver Messages Using a Variety of	P	R	P	P	P	R	P	R	R	P	P	P	P

P=Primary, R=Reinforcing

**Appendix A-3: Competencies in the ECU MPH Program: Environmental Health Science Option**

Competencies: Upon graduation a student with an MPH should be able to:

1. Characterize and explain mechanisms of toxicity and injury associated with environmental and occupational exposures.
2. Develop effective communication with diverse stakeholders on environmental and occupational health issues.
3. Describe how contaminants are introduced into air, water and food and the pathways
4. Assess and recommend prevention, control, and management strategies for environmental and occupational health exposures
5. Identify barriers to health equity in environmental and occupational health issues
6. Select and apply appropriate risk assessment methods for environmental and occupational health agents
7. Describe the process and formation of standard setting in environmental and occupational health

**Appendix A-3.1: Environmental Health Science and Protection Accreditation Council (EHAC) Competencies in the ECU MPH Program: Environmental Health Science Option**

**EHS Option Courses/Experiences by which the MPH core competencies are met**

MPH-EHS Option Courses and Experiences							
Core Competencies	EHS 855: Emergency San/Shelter/Environments	EHS 865: Env Toxicology	EHS880: Food/Waterborne Disease	EHS 863: Field Experience in Env Health	EHS 890: Graduate Research Env Health Science	EHS 830: Survey of PH Statistical Analysis	Elective
Biostatistics		R		R	R	R	
Epidemiology: A		R	R			R	
Epidemiology: B		R			R		
Health Policy				R			
Social and Behavior Science				R			
Program Planning				R		R	
Environmental Health	P	P	P	P	P	P	P
Leadership				R	R		
Professionalism				P	P		
Systems Thinking				R		R	
Public Health Biology	R	R	R	R	R		R

P=Primary, R=Reinforcing

**A-3.2**



**MPH-EHS Option Courses/Experiences by which the EHS option specific competencies are met**

Environmental Health Competencies	MPH 800**	MPH 825**	EHS 855**	EHS 865**	EHS 880**	EHS 890**	EHS-863**	MPH 895**	EHS 835	Elective –3 hrs
Characterize and explain mechanisms of toxicity and injury associated with environmental and occupational exposures.	R		P	P	P	R	R	R	P	P
Develop effective communication with diverse stakeholders on environmental and occupational health issues.	R	R	P	R	P	R	P	R	P	R
Describe the pathways for contaminants to be introduced into air, water and food	R		P	P	P	R		R	R	
Assess and recommend prevention, control, and management strategies for environmental and occupational health exposures	R	R	P	P	P	R	R		P	P
Identify barriers to health equity in environmental and occupational health issues	R		P	P	P	R		R	R	R
Select and apply appropriate risk assessment methods for environmental and occupational health agents	P		R	P	R	R	R	R	P	R
Describe the process and formation of standard setting in environmental and occupational health	P	R	P	P	P	R		R	P	R

## Appendix A-4: Competencies in the EKU MPH Program: Industrial Hygiene Option

Competencies: Upon graduation a student with an MPH in Industrial Hygiene should be able to:

1. Characterize and explain mechanisms of toxicity and injury associated with environmental and occupational exposures.
2. Develop effective communication with diverse stakeholders on environmental and occupational health issues.
3. Describe how contaminants are introduced into air, water and food and the pathways
4. Assess and recommend prevention, control, and management strategies for environmental and occupational health exposures
5. Identify barriers to health equity in environmental and occupational health issues
6. Select and apply appropriate risk assessment methods for environmental and occupational health agents
7. Describe the process and formation of standard setting in environmental and occupational health

### Appendix A-4.1: Environmental Health Science and Protection Accreditation Council (EHAC) Competencies in the EKU MPH Program: Industrial Hygiene Option

**Industrial Hygiene Option Courses/Experiences by which the MPH core competencies are met**

MPH-EHS Option Courses and Experiences							
Core Competencies	EHS 840: Industrial Hygiene Principals	EHS 865: Env Toxicology	EHS841: Essentials of Industrial Hygiene	EHS 863: Field Experience in Env Health	EHS 890: Graduate Research Env Health Science	EHS 835: Survey of PH Statistical Analysis	Elective
Biostatistics		R		R	R	R	
Epidemiology: A		R	R			R	
Epidemiology: B		R			R		
Health Policy				R			
Social and Behavior Science	R			R		R	
Program Planning				R		R	
Environmental Health	P	P	P	P	P	P	P
Leadership				R	R		
Professionalism				P	P		
Systems Thinking				R		R	
Public Health Biology	R	R	R	R	R	R	R

P=Primary, R=Reinforcing

## A-4.2

### MPH-Industrial Hygiene Option Courses/Experiences by which the Industrial Hygiene option specific competencies are met

Environmental Health Competencies	MPH 800**	MPH 825**	EHS 840**	EHS 865**	EHS 841**	EHS 890**	EHS-863**	MPH 895**	EHS 835	Elective –3 hrs
Characterize and explain mechanisms of toxicity and injury associated with environmental and occupational exposures.	R		P	P	P	R	R	R	P	P
Develop effective communication with diverse stakeholders on environmental and occupational health issues.	R	R	P	R	P	R	P	R	P	R
Describe the pathways for contaminants to be introduced into air, water and food	R		P	P	P	R		R	R	
Assess and recommend prevention, control, and management strategies for environmental and occupational health exposures	R	R	P	P	P	R	R		P	P
Identify barriers to health equity in environmental and occupational health issues	R		P	P	P	R		R	R	R
Select and apply appropriate risk assessment methods for environmental and occupational health agents	P		R	P	R	R	R	R	P	R
Describe the process and formation of standard setting in environmental and occupational health	P	R	P	P	P	R		R	P	R

## Appendix A-5: Competencies in the ECU MPH Program: Public Health Nutrition Option

Upon graduation a student with an MPH in Public Health Nutrition should be able to:

- Integrate nutrition and exercise into health promotion and chronic disease programming.
- Interpret and utilize public health assessment and statistics for the practice of public health nutrition.
- Assess how food access and availability impacts nutritional health within a community.
- Analyze and be able to utilize federal, state, and local nutrition programs through all stages of the life cycle.
- Apply knowledge of eating behaviors to culturally diverse populations across the life cycle.

MPH-PHN Option Courses and Experiences												
Core Public Health Nutrition Competencies	NFA 817: Maternal, Infant, Child Nutrition	NFA 812: Public Health Nutrition	NFA 805: Nutrition for Health Promotion	NFA 826: Nutrition for Chronic Disease	HEA 791: Women's Health	HEA 820: Global Health	HEA 825: Planning & Eval of CH Programs	HEA 856: Applied Epidemiology	HEA 898 : Health Care Delivery	HEA 880: Scholarship in Community Education	NFA 840: Public Health Nutrition Practicum	MPH 895: PH Capstone
Biostatistics		R			R	R	R	P	P	P	P	
Epidemiology: A		R		R	R	R	P	P	P	P	P	
Epidemiology: B				R	R		P	P		P	P	
Health Policy		P					P			P	P	
Social and Behavior Science	R	R	R				P			P	P	
Program Planning	R	P	R		P	P	P	R		P	P	
Environmental Health				R				P			R	
Leadership		R		R		R	P	R		P	P	
Professionalism	R	R	R	R	R		R	P		P	P	
Systems Thinking		P	R	R		P	R	P		P	P	
Public Health Biology				R				R		R	R	

**A-5.2 - MPH Public Health Nutrition Option Courses/Experiences by which the Public Health Nutrition option specific competencies are met**

<b>MPH in Public Health Nutrition Competencies</b>	<b>NFA 817: Maternal, Infant, Child Nutrition</b>	<b>NFA 812: Public Health Nutrition</b>	<b>NFA 805: Nutrition for Health Promotion</b>	<b>NFA 826: Nutrition for Chronic Disease</b>	<b>HEA 791: Women's Health</b>	<b>HEA 820: Global Health</b>	<b>HEA 825: Planning &amp; Eval of CH Programs</b>	<b>HEA 856: Applied Epidemiology</b>	<b>HEA 898 : Health Care Delivery</b>	<b>HEA 880: Scholarship in Community Health</b>	<b>NFA 840: Public Health Nutrition Practicum</b>	<b>MPH 895: PH Capstone</b>
Integrate nutrition and exercise into health promotion and chronic disease programming	R	P	P	P	R	R	R		R	P	P	P
Apply knowledge of eating behavior to culturally diverse populations across the lifecycle	P	P	R	R	R					P	P	P
Interpret and utilize public health assessment and statistics for the practice of public health nutrition	R	P	R	R			R	R		P	P	P
Assess how food access and availability impacts nutritional health within a community	R	P	P	P		R	R		R	P	P	P
Analyze and be able to utilize federal, state, and local nutrition programs through all stages of the life cycle	P	P	R	R		R	R	R	R	P	P	P